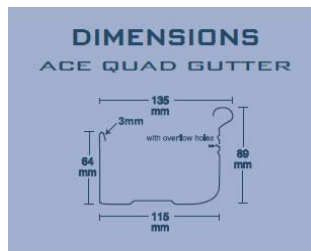


ACE QUAD

INSTALLATION GUIDE / HANDY HINTS

Please note - Ace Gutters Pty Ltd supply Rainwater Product Installations Guides to assist our customers. Ace Gutters are not responsible for the design of a roof drainage system and or the installation of a gutter system. These responsibilities are held by the relevant trade professionals.



FLOW RATE:
Volume in 1m length 1.5 litres / second.
6.2 litres measures to overflow holes.

ORDERING OF MATERIALS

Prior to ordering your Ace Quad and Accessories we recommend that you draw a plan of your building, measuring each section of the building separately. This is important as it will assist you in determining the number of stop ends, nozzles and external and internal angles required.

To further assist you when ordering your materials please allow an additional 200mm past the end of the fascia for every length of guttering that requires an external angle.

For bracketing, internal and or external brackets are generally fixed at 1.0m intervals.

Listed below are guidelines on the installation process itself, however please contact our **Technical Sales Area on 02 9584 4766** should you require further information.

The INSTALLATION process

EXTERNAL ANGLES, determine your starting point / corner, then nail or screw the outer piece of the external angle to the fascia via the slots (both sides), with the top of the angle 20mm below the top of the fascia (minimum fall 1:500mm) See PIC 1/2



PIC 1



PIC 2

To determine your required fall (general rule 1mm fall for every 500mm) nail or screw the outer of your second external angle to the next corner. To assist you in achieving an accurate fall you can use a string line, fixing the string line to the high end of the fascia and then running the string line to the opposite corner, making sure that the string line is taut.

For example if a particular run of gutter is 12.0 metres in length, fit the external angle at the low end 24 mm (12000m divided by 500mm = 24mm) lower than the angle that has been fitted at the high end.

Prior to attaching your guttering to the fascia we recommend you pre cut your angles and nozzle outlets on the ground.

For external angles measure your gutter to the same length as your fascia length, and then add 200mm for each external corner cut required.

For example, if your fascia is 6.0m in length and there are two external corners required, one at either end, then you need to cut your gutter length to 6.4m, the additional 400mm of material (200mm each end) allowing you to then cut your two angles at 45 degree. If only one external angle is required then the gutter length required would be 6.2m.

CUTTING ANGLES



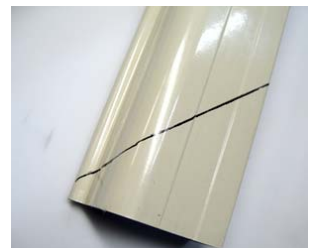
STEP 1



STEP 2



STEP 3



STEP 4



STEP 5



STEP 6



STEP 7



STEP 8



STEP 9



STEP 10



STEP 11

HOW TO FIT A NOZZLE, place your nozzle on the bottom of the gutter and mark around the inside of the nozzle with a marker at the same time marking your rivet holes, then cut out the marked area using snips drilling 1/8th holes for the rivets (the cut out for 90mm is 96mm x 63mm).

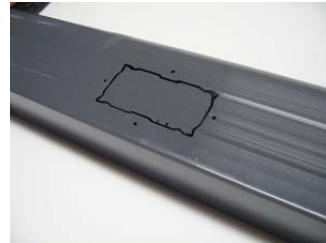
Then apply approximately a 6mm strip of Ace Neutral Cure Sealer around the flanges of the nozzle and place the nozzle over the cut out section and then fixing the nozzle to the gutter using pop rivets. Clean off any excess sealer with a cloth.



STEP 1



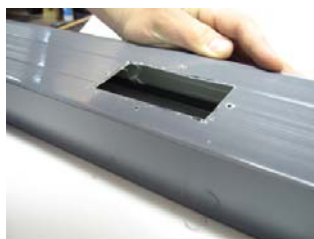
STEP 2



STEP 3



STEP 4



STEP 5



STEP 6

STOP ENDS, when fitting stop end plates insert your stop end into the end of the gutter, then drill 4 holes, two into the back of the gutter, one into the bottom of the gutter and one into the front of the gutter, then separate the stop end from the gutter, apply sealer around the end of the gutter and then re insert the stop end plates. Fix by inserting pop rivets through the four pre drilled holes. Clean off any excess sealer with a cloth.



STEP 1



STEP 2



STEP 3

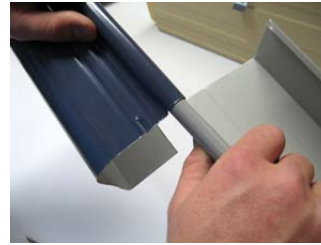
LAPJOINING



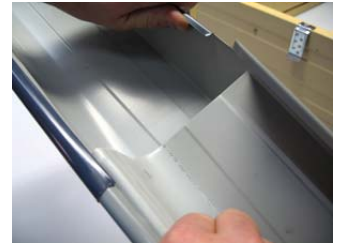
STEP 1



STEP 2



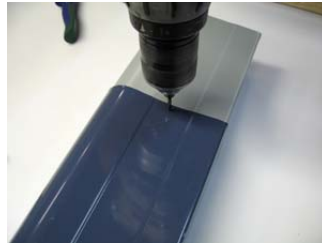
STEP 3



STEP 4



STEP 5



STEP 6



STEP 7



STEP 8

BRACKETS, when installing quad gutter there are four types of brackets available to choose from.

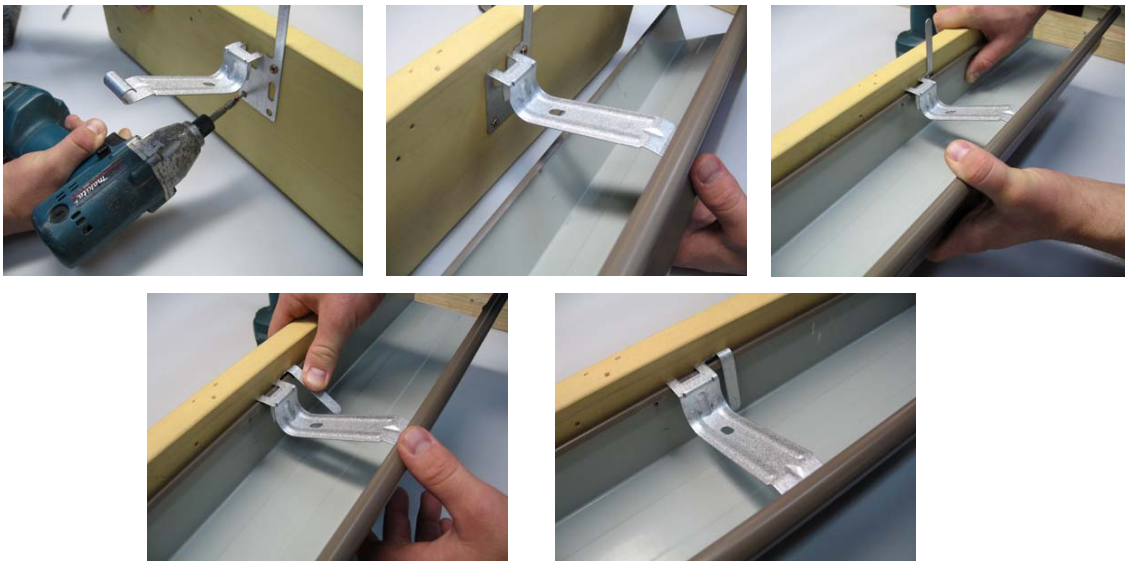


- (i) a **concealed bracket** is the most commonly used bracket, spaced at 1.0m intervals. Fix timber suspension clips at approximately 2m centres into the top of the timber fascia (checking the level of the fascia) then slide back edge of gutter up into the adjusting teeth, falling towards the downpipe, a must for someone working alone. Then place the concealed brackets at 1.0m centres into the gutter whilst the gutter is on the ground. Lift the gutter up into the suspension clip engaging the back edge of the gutter into the suspension clip. Create a fall towards the downpipe outlet at 1:500mm then either nail or screw through the concealed bracket and gutter into the timber fascias.

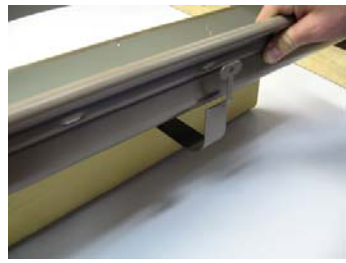


- (ii) another bracketing system that is popular is our **suspension clip and overstrap** bracketing system. Our suspension clip for steel fascia is fitted at 1.0m intervals by simply snapping the suspension clip over the top of the steel fascia and then applying pressure down with heel of palm and into place.

With timber suspension clips also fix at approximately 1m centres into the top of the timber fascia (checking the level of the fascia) place overstrap brackets at 1.0m centres into the gutter whilst the gutter is on the ground. Lift the gutter up into the suspension clip engaging the back edge of the gutter into the suspension clip (adjust fall) then fold the strap over the top of the timber.



- (iii) our **concealed suspension bracket** is recommended for existing metal pitched roofs, using your string line to determine your fall, hook the bead of the gutter into the front of the bracket and then roll the gutter under and into the back of the bracket engaging the suspension teeth into the back edge hook of the gutter (handy hint – lift the bead slightly when engaging the suspension tooth, then push back down).



- (iv) **external pre painted gutter brackets** are also available. These brackets are fitted and centred along the string line, fixed to the fascia by nail or screw and then the gutter is rolled into the brackets, fixed again by either a nail or screw through the back of the gutter.

SEALING OF ANGLES/NOZZLES/JOINS - when applying Ace Neutral Cure Sealer, apply approximately a 6mm diameter continuous seal along all joins. Always clean away excess sealer with a cloth.

FIXING ACE QUAD TO STEEL FASCIA – Position and roll your guttering into the suspension clips allowing for your fall. When using an overstrap bracket in addition to a suspension clip, fix your overstrap brackets to the back of the gutter with the lugs sliding up under the fold at the back of the gutter, then bend the tail of the overstrap bracket back over and inside the back of the gutter.

FIXING ACE QUAD TO FASCIA COVER – Existing timber fascia may need to be straightened prior to fixing fascia cover to it. The fascia cover is attached to the timber fascia by screws along the top groove of the fascia cover. Steel fascia corners can be used as opposed to having to make your own corners by cutting and folding. *Timber Fascia Suspension Clips can also be used as an alternative*



TOOLS REQUIRED for the Installation of Gutter, Fascia and Downpipes



Please Note – for your gutter system to work effectively please refer to the section below headed “Design, Installation and Maintenance Considerations”.

DESIGN, INSTALLATION and MAINTENANCE CONSIDERATIONS

DESIGN - for a gutter system to work effectively the roof drainage system must be designed by a suitably qualified trade professional, in accordance with the Building Code of Australia and Australian Standards.

When designing a gutter system the architect and or relevant qualified trade professional must give consideration to – rainfall intensity, roof mass / catchment area and gutter, downpipe sizes and number of downpipes required based on these considerations

INSTALLATION – a gutter system must be installed in accordance with the Acceptable Construction Manual AS/NZS 3500.3 Stormwater Drainage and or AS/NZS 3500.5 Domestic Installation, Stormwater Drainage.

Product Compatibility - please note there are some products that are not compatible with pre painted steel, for example lead and copper. Please refer to page 40 of our current price list for further information.

MAINTENANCE – it is important that once a gutter system has been installed a maintenance program is put in place by the home owner / occupier to ensure that there are no blockages in the gutter system through the build up of debris or similar.



ACE GUTTERS PTY LTD ABN 49 001 885 276

SYDNEY
69 Boundary Road
Mortdale NSW 2223
Ph: 02 9584 4777
Fax: 02 9584 4799

MELBOURNE
12-14 Industrial Drive
Braeside VIC 3195
Ph: 03 9586 4888
Fax: 03 9586 4877

www.acegutters.com.au