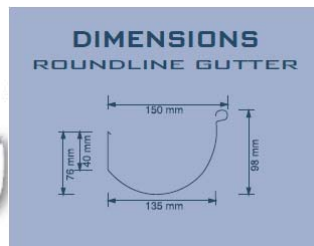


ACE ROUNDLINE

INSTALLATION GUIDE / HANDY HINTS

Please note - Ace Gutters Pty Ltd supply Rainwater Product Installations Guides to assist our customers. Ace Gutters are not responsible for the design of a roof drainage system and or the installation of a gutter system. These responsibilities are held by the relevant trade professionals.



FLOW RATE:

Volume in 1m length with overflow holes

1.5 litres / second.

2.5 litres / second without overflow holes.

6.32 litres measured to overflow holes.

7 litres measured to back of gutter.

ORDERING OF MATERIALS

Prior to ordering your Ace Roundline and Accessories we recommend that you draw a plan of your building, measuring each section of the building separately.

This is important as it will assist you in determining the lengths of gutter, number of stop ends, nozzles, external and internal angles and bracketing that you will require to complete your job.

To assist you when ordering your gutter lengths please allow an additional 200mm past the end of every length of guttering that requires an external angle.

For your information we recommend that all bracketing, internal and or external brackets are generally fixed at 1.0m intervals.

Listed overleaf are guidelines on the installation process itself, if you require any additional information and or assistance please contact our **Technical Sales Area on 02 9584 4766**.



ANGLES / CORNERS

It is recommended that all corners be cut on the ground using the template provided.

Placing the corner template around the end of the gutter, then drawing a line to highlight the area to be cut.

Where external corners are required at both ends of a gutter run, cut 12mm shorter than the fascia measurement to allow for the angle.

Then fit your stop ends as required.

ROUNDLINE on STEEL FASCIA

- using suspension clips and overstrap brackets

STEP 1

To create a starting point for the hanging of your first piece of gutter place a suspension clip over the top of the fascia and push down until the clip is fully engaged.

Then position two additional clips at least 1.0m apart on each side of the balance point of the gutter to be installed.

STEP 2

Holding the gutter from underneath, push the back edge of the gutter up between the face of the fascia and the suspension clips until the retaining rib engages at least the bottom barb of the suspension clip.

STEP 3

Position additional suspension clips along the length of each run of steel fascia.

When inserting the gutter between the face of the fascia and the suspension clips, take into consideration the fall that you will require (generally 1mm every 500mm) to ensure that all of the rainwater runs towards the downpipe outlet.

You can achieve this by pushing the gutter higher into the suspension clip at the opposite end of where your downpipe outlet is.

Roundline overstrap brackets should be used in conjunction with the suspension clips.

Place the overstrap brackets at 1.0m centres into the gutter whilst the gutter is on the ground.

Then lift the gutter up into the suspension clip, engaging the back edge of the gutter into the clip (adjusting for fall) and then fold the strap over the top of the steel fascia.

CONCEALED SUSPENSION BRACKETS are an alternate fixing system that can be used in the installation of Ace Roundline Gutter. This bracket is a suspension clip and bracket built into one.



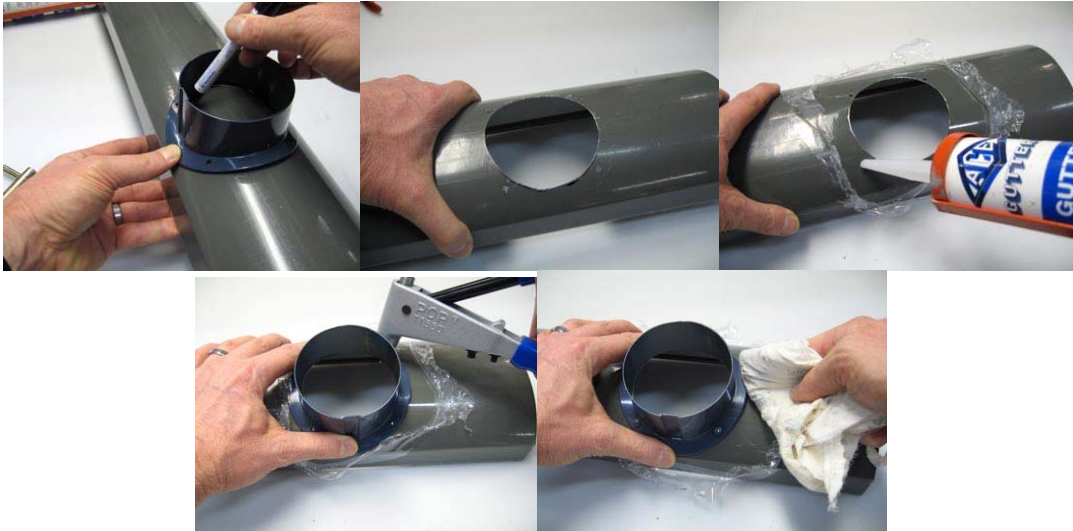
Decide your starting point from a corner, screw 20mm from the top of the fascia and then secure a string line to this bracket.

Decide your fall towards your downpipe outlets and then screw at that end, tying the string line to the nail or screw. Repeat this process on all gutter runs.

Fix your concealed suspension brackets to the steel fascia using screws at 1.0m centres with the bottom of these brackets in line with your string line.

Once your brackets have been installed position and roll your Roundline gutter from the bead section of the bracket and push the back edge of the gutter up between the bracket and holding the lug until the retaining rib becomes engaged. Use Ace Neutral Cure Sealer to seal all joints.

NOZZLES



Using the Ace template provided push out the cardboard centre piece prior to placing the template around the gutter.

The template edge fits flush under the gutter bead. You then mark your nozzle cut out area.

Once you have cut out the area for your nozzle apply a 6mm bead of Ace Neutral Cure Sealer around the cut out edge. Then fix to gutter with Pop Rivets.

STOP ENDS



Fit the stop ends into the gutter prior to installation, drilling 4 pop rivet holes at spaces around the end of the gutter.

Then separate the stop end from the gutter and apply a 6mm bead of silicone to the inside edge of the gutter.

Then re fit the stop ends into the edge of the gutter, fixing the two together with pop rivets inserted into the pre drilled holes.

Clean of any excess sealer.

VALLEYS

For ordering purposes measure the length of valleys required from the ridge to the gutter, adding a metre for trimming around the ridge and fascia.

Then lay the valley on the valley boards and secure with bent nails over the roll on the valley sides.

Do not nail through the valley.

Where joining is required apply Ace Sealer to the joined area, lap top section 100mm over the bottom section and then fix with pop rivets using Ace Sealer again to seal these rivets.

PLEASE NOTE

Ace Gutters recommend that Ace Half Round Gutter be used when fixing directly on to rafter ends.

TOOLS REQUIRED for the Installation of Gutter, Fascia and Downpipes



Please Note – for your gutter system to work effectively please refer to the section below headed “Design, Installation and Maintenance Considerations”.

DESIGN, INSTALLATION and MAINTENANCE CONSIDERATIONS

DESIGN - for a gutter system to work effectively the roof drainage system must be designed by a suitably qualified trade professional, in accordance with the Building Code of Australia and Australian Standards.

When designing a gutter system the architect and or relevant qualified trade professional must give consideration to – rainfall intensity, roof mass / catchment area and gutter, downpipe sizes and number of downpipes required based on these considerations

INSTALLATION – a gutter system must be installed in accordance with the Acceptable Construction Manual AS/NZS 3500.3 Stormwater Drainage and or AS/NZS 3500.5 Domestic Installation, Stormwater Drainage.

Product Compatibility - please note there are some products that are not compatible with pre painted steel, for example lead and copper. Please refer to page 40 of our current price list for further information.

MAINTENANCE – it is important that once a gutter system has been installed a maintenance program is put in place by the home owner / occupier to ensure that there are no blockages in the gutter system through the build up of debris or similar.



ACE GUTTERS PTY LTD ABN 49 001 885 276

SYDNEY
69 Boundary Road
Mortdale NSW 2223
Ph: 02 9584 4777
Fax: 02 9584 4799

MELBOURNE
12-14 Industrial Drive
Braeside VIC 3195
Ph: 03 9586 4888
Fax: 03 9586 4877

www.acegutters.com.au