

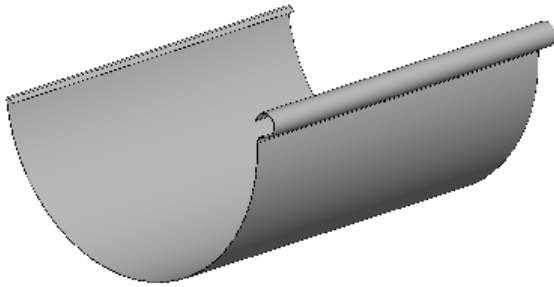


# 200MM/250MM HALF ROUND GUTTER

MANUFACTURED FROM



**\*\*\*Certified and Compliant to the Building Code of Australia and relevant Australian Standards\*\*\***



200MM/250MM HALF ROUND GUTTER



EXTERNAL 90° ANGLE



INTERNAL 90° ANGLE



STRAIGHT JOINER



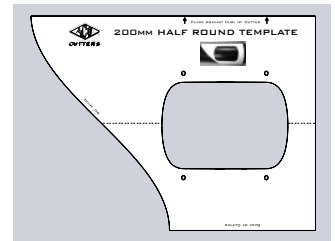
EXTERNAL BRACKET



STOP ENDS



100MM NOZZLE



TEMPLATE

## FEATURES

- AS/NZS 3500.3.2018 Compliant
- AS/NZS 2179.1.2014 Compliant
- Overflow provision built in (10mm gap)
- Nut Setter & screws supplied (free of charge) for external brackets, external angles, stop ends, nozzles.

## BENEFITS

- Fittings are Aluminium Diecast
- Lighter, stronger, no spot welds
- High Quality Powder Coated Finish
- 24-48h Lead Time
- Available in all Industry Colours
- Template supplied for Nozzle/Angle Mitre

## BENEFITS OF DURAKOTE® PRE-PAINTED STEEL

- Roofing 30 Year Warranty/Rainwater Products 20 Year Warranty
- Offers an additional 20% backing coat to enhance product durability
- Offers a nominal 20 microns of top coat (industry standard 18 microns)
- DURAKOTE® is endorsed and licensed by the Australian Made Campaign
- DURAKOTE® is listed on the LAHC deemed to comply product register

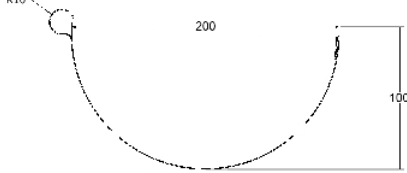


## CERTIFICATION

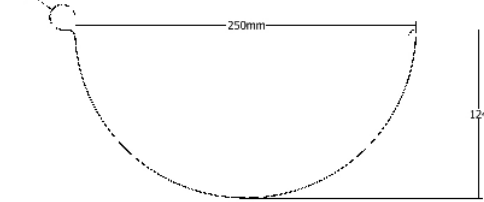
NOTE: Independent Certifying Engineer states all fittings/ componentry ensure Ace Gutters 200mm/250mm Half Round system complies to both the BCA and all relevant Australian Standards.

- gutter, bracket, and fastener
- connection details to fascia
- continuous back gap over the capacity grid
- the maximum ridge to gutter length

200MM PROFILE DRAWING



250MM PROFILE DRAWING



200mm Material - AS1397/G300, 0.55m BMT  
 250mm Material - AS1397/G300, 0.60m BMT  
 minimum coating class AZ150 on the inside surface and pre painted DURAKOTE® on the outside surface compliant to AS2728

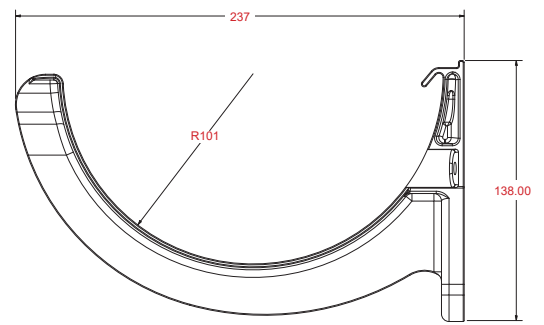
## TECHNICAL DATA

EFFECTIVE CROSS SECTION AREA, $A_{EFF}$ (MM <sup>2</sup> )	NOMINAL FLOW CAPACITY (FOR GUTTER SLOPE = 1:500) (L/S/M)	BACK GAP OVERFLOW CAPACITY (L/S/M)	INTERNAL SIZE OF VERTICAL DOWNPIPE (MM)	MAXIMUM DOWNPIPE SPACING (M)	MAXIMUM BRACKET CENTRES (M)
200MM - 9600 <sup>#</sup>	4.90 <sup>#</sup>	1.5	ROUND - 125 DIAMETER OR RECTANGULAR - 100 x 75	12	1.2
250MM - 21500*	12.06*	1.5			

<sup>#</sup>Measured 31mm below the overflow line (minimum required in AS/NZS 2179.1 is 10mm). \*Measured 10mm below the overflow line

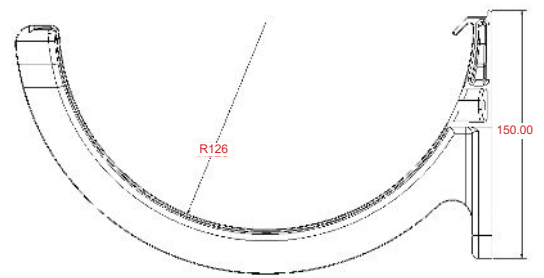
ARI (1 IN 100 YEARS) (MM/H)	GUTTER BACK OVERFLOW CAPACITY (L/S/M)	MAXIMUM RIDGE TO GUTTER LENGTH (M)
150	1.5	36
175		31
200		27
225		24
250		22
275		20
300		18
325		17
350		15

200 EXT BRACKET/ ST JOINER



Material - Diecast Aluminium

250 EXT BRACKET/ ST JOINER



## INSTALLATION SPECIFICATIONS

- Screws - Ace Gutter Hex Head self-drilling screw, M6 - 2x32mm (Coating class AS3566 Class 3) (3 screws required per bracket)
- Gutter slope - 1:500 or steeper
- Fascia material - a. Timber - Hardwood or Softwood; or b. Metal Fascia AS1397/G550, 0.42mm BM with timber blocking at the back of fascia; or c. Metal Fascia AS 1397/G450, 1.9mm BMT



NSW  
 69 Boundary Rd  
 Mortdale NSW 2223  
 Ph: (02) 9584 4777  
 E: sales@acegutters.com.au

NOWRA  
 Lot 24 10 Cumberland Ave  
 South Nowra NSW 2541  
 Ph: 02 4428 7111  
 E: nowrasales@acegutters.com.au

NEWCASTLE AREA  
 Ph: (02) 4948 6611  
 (02) 4325 5200  
 Canberra Regional Manager  
 Ph: 0439 400 300

VICTORIA  
 12-14 Industrial Drive  
 Braeside VIC 3195  
 Ph: (03) 9586 4888  
 E: acevic@acegutters.com.au